



NHRA SAFETY

Incident Response Training

Be prepared



1955 NHRA Safari Crew

FACILITY PREPARATION & PERSONNEL

- Have a designated spokesperson to handle all private, public and media statements.
 - Be aware of your media surroundings at all times.
- Qualified personnel designated for all medical, fire and security operations.
- Contact local hospital(s) & know procedures in the event of a serious incident.
 - Helicopter vs Ground Ambulance
 - Keep local traffic in mind for ground transportation
 - Trauma & Burn Center
- Have sufficient security, medical and fire protection for anticipated crowd.
- Have an Incident Action Plan.

INCIDENT PROCEDURES

- Incident Procedures begin with facility preparation
- Give NO opinions or conjectures to anyone
- The incident happens
 - Radio Priority
 - Response
 - Making the scene safe
 - Complete tasks at hand
 - Preserve and Protect
- Incident is under investigation
- Witnesses – Obtain Name(s), Address, Phone Numbers(s) ASAP
- Take photos of the incident prior to track clean-up

RESPONSE VEHICLES



- Combined fire & clean up
 - Vehicle / Equipment Checklist
 - Personnel Duties
- Dedicated track ambulance
- Tow truck /Roll Back
- Larger events – 2nd Ambulance/ First Aid Area



WHAT TO DO.....



EXTRICATION

- LOOK AT THE BIG PICTURE
- Electrical Shut Off
- Passive Restraint Systems
 - Belts
 - Head / Neck Restraint
- Composite Body Components
- Laminated Glass
- Team Effort
- Fire
 - Fuel
 - Oil
 - Electrical



EXTRICATION TOOLS



BLACK PELICAN BOX

- Multi Purpose Tools
- Make yourself familiar with the tools
- Check batteries daily

HURST POWER UNIT

- Hurst Spreaders and Cutters
- Only trained personnel
- Check Power Unit & Tools Daily



ELECTRICAL SHUT OFFS



FIRE SUPPRESSION

- Classes of Fire
 - Class A – Wood, Paper, and Certain Textiles. Water is an effective on these fires.
 - Class B – Gasoline, Kerosene, Greases, Oil, Methane & Hydrogen. Carbon Dioxide and Foam are effective on these fires.
 - Class C – Live electrical circuits. Carbon Dioxide is commonly used on these fires.
 - Class D – Titanium, Magnesium, and Sodium. Special extinguishants are used on these types of fires.
- Personal Protective Equipment (PPE)
 - To include but not limited to – Protective Clothing, Gloves, Proper Eye & Ear Protection
 - Remember YOU are the first priority
- Fire Extinguishers
 - Pressurized Water with an Additive – Cold Fire / Fire Aid
 - CO2
 - Halon
 - ABC
 - Purple K
 - Cold Fire / Fire Aid
- Tactics

Racing Fuels

- Leaded/Unleaded Fuel
- Special Manufactured “Racing Fuel”
 - Higher Octane
 - More Volatile
- Methanol
 - **Flame usually invisible during daylight**
 - Reactive with certain chemicals & metals
- Nitro-Methane
 - Highly volatile/explosive, reactive to lead, copper and their alloys
 - Sensitive to shock and compression
 - Colorless and mostly odorless
- Nitrous Oxide

TRACK CLEAN-UP



- How wide is the oil?
- How thick is the oil?
- Is the wind blowing? Which direction?

Remember- We are all officials

- Underage drivers of motorized vehicles
- Kids under age of 14 in restricted area must be inside cab of vehicle. Golf Cart not a cab!
- Skate boards, bicycles, scooters, etc
- Warm ups- General Regulations
- Driver safety equipment

Funny Car Body – Latch System

Front of Body



**Both handles in the vertical position –
Body is properly latched and secured**



**Both handles in a diagonal position –
Body is not secured**



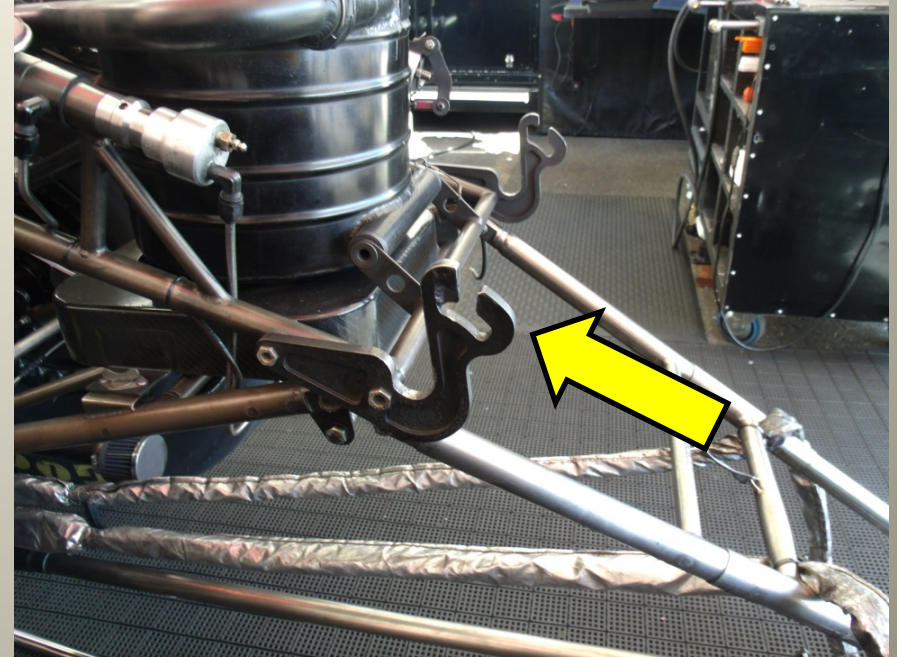
**One handle vertical & one handle diagonal –
Only ONE side of the body is secured properly**

Funny Car Body – Latch System

Back of Body



Pull the handle to release back of the body

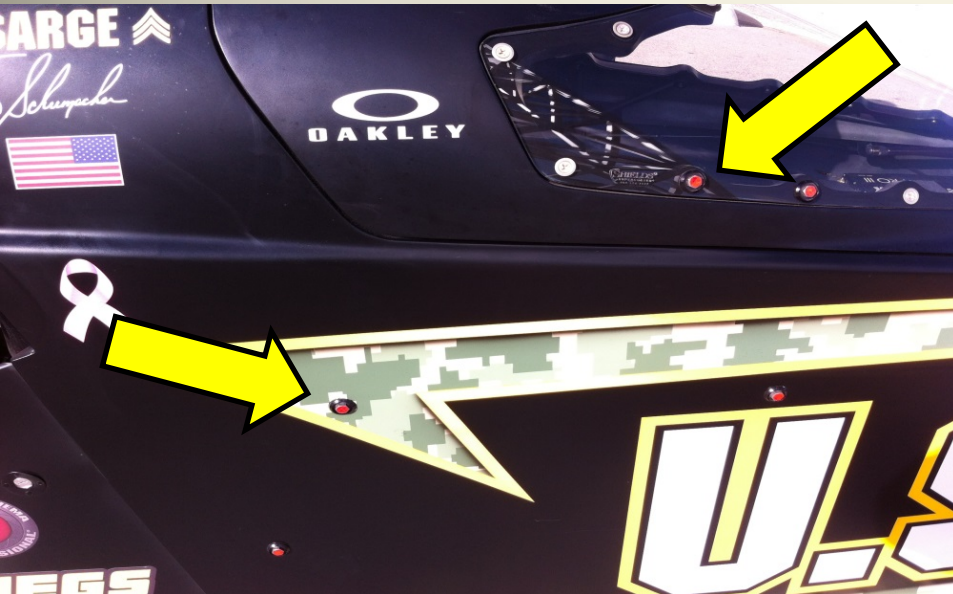


Once the handle has been released push the body forward then lift
Note – Some cars the body can be lifted straight off

TOP FUEL CANOPIES – Release

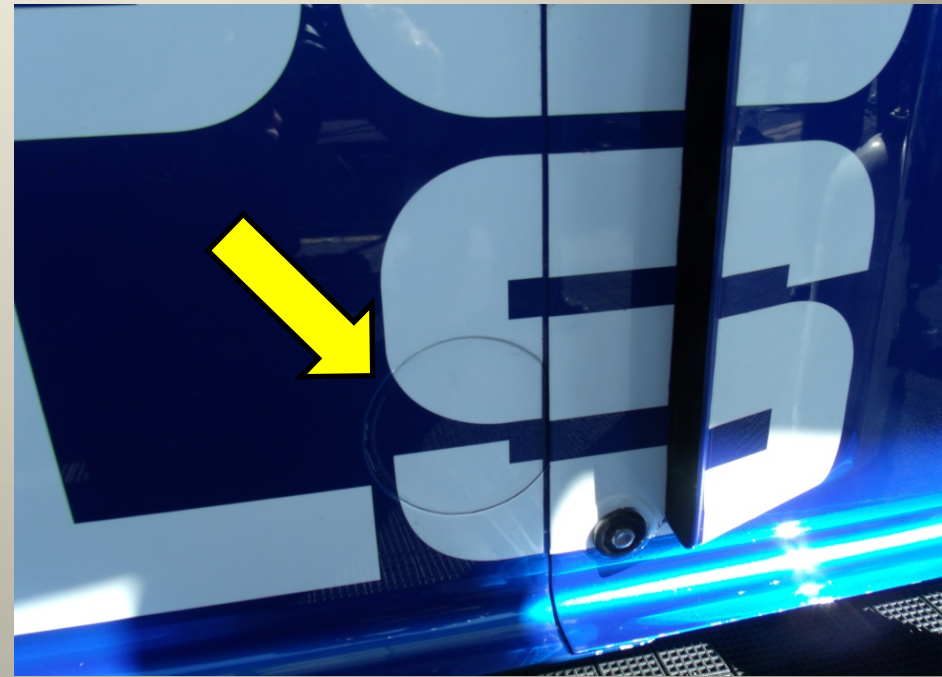


TOP FUEL CANOPIES



If both the driver and outside canopy releases fail the RED bolts can be used to remove the canopy manually. ALL red bolts must be removed before canopy can be released.

TOP FUEL KICK PANELS



Kick panels are used for fire suppression with a compromised entry into the cockpit with the possibility of fire.

EJECT HELMET REMOVAL SYSTEM



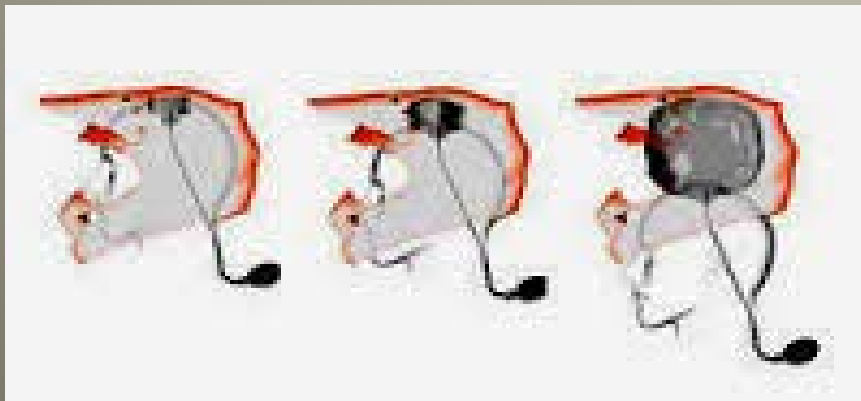
Hand Inflation Pump



CO2 Inflation Pump

All Pro drivers are required to have the Eject System installed in their helmet.

One time use kits



A SPECIAL THANK YOU



SFI Foundation

NHRA

National Dragster

ESPN

John Force Racing

Don Schumacher Racing

Bob Vandergriff Racing

Mark Rebillas Photography

Eject Safety

Ron Conner

Tawnya Heinrich

Safety Safari Members